

pbpa.gemnewsletter@gmail.com

Happy New Year!

What a busy summer we've had. Whilst we may not have had quite as many people staying in rentals as in previous years, we had plenty of day visitors.

Thank you so much to all our wonderful volunteers who raised over \$20,000 towards maintenance for our community hall through fundraising activities such as Santa photos, Kids discos, a Bush Dance, Bingo, Raffles & the Summer Book Fair; and also to all those who made the Australia Day activities such a success.

The Hall Committee are in the process of getting quotes for roof insulation and floor sanding & resurfacing (amongst other things), so the recently raised funds will be put to good use!

The hall is looking fantastic after its landscaping makeover and is also about to undergo a wash & spruce up though a community working bee.

I encourage people to get involved in our wonderful Pearl Beach community in one way or another - helping at the hall, volunteering for Events or coming up with Fundraising ideas. We have the Pearl Beach Progress Association meetings (and social drinks afterwards) on the first Saturday of the month at 5pm and a Community BBQ breakfast on the second Sunday at 8.30am to 10.30am - both events are great opportunities to meet new people and become involved in our amazing Community.

Regards,  
Karina  
0401 991454

## Community Breakfast BBQ – What's new?

Pre-order pastries & bread

**Burnt Honey**

**Sourdough**

- White - small large
- Junos
- Wholewheat - S L J
- Eye
- Muesli
- Spelt - small large
- Olive & Rosemary
- Fruit

**Vegan**

- Mature pecan banana cake - 6 serves
- Choc chip eye cookies

**Pastries**

- Croissants
- Chocolate croissants
- Fruit & custard danish
- Seeded mustard chicken & honey sausage
- Cups Quen
- Cinnamon scroll
- Butter de Nuts

**Of Cakes**

- White chocolate & orange chocolate - 10 serves
- Cake special changes regularly - 10 serves
- Lebanese almond brown butter cake

Bacon & egg rolls

**BREAKFAST BBQ BACON & EGG ROLLS - \$5**

THIS SUNDAY FROM 8.30AM

COMMUNITY HALL BACK DECK

Pick up a box of local, fresh fruit & veggies

**Fresh local Produce**

Fruit & vegetable boxes small & medium size

Delivered to the hall for pick up at the Community Breakfasts.

Ask for more details.



Margaret Westcott Editor

Every 2<sup>nd</sup> Sunday of the month on the back deck at the Community Hall – catch up with friends & meet new people!

---

## SAFETY ADVISOR GROUP

---

### **Pearl Beach Memorial Community Hall Community Support Centre Project – “Neighbourhood Safer Place”**

The project is mostly completed with installations of the alternative power consisting of solar, batteries and generator, and the bush fire sprinkler system. The following components of the infrastructure work are in course of completion over the next 2-3 months:

- Installation of the spearpoint delayed by issues encountered with Water NSW issuing a water access licence. Matter raised directly with the Minister of Lands & Water and the Minister for Emergency Services – we have been lead to believe this matter will be resolved shortly. Once the Water Access Licence is issued and all fees paid, we will then need to obtain fresh quotes from a contractor to install the spearpoint.
- Purchase of personal protection equipment (PPE) and associated Neighbourhood Safer Place equipment are currently being sourced with quotes requested. This is all necessary bearing in mind the Community Support Centre has been approved by NSW Rural Fire Service as a Neighbourhood Safer Place, as advised in the December GEM.
- Formal sign-off commissioning by our contracted plumber, Waterflow Plumbing, will occur once the spearpoint is installed. Note - Waterflow Plumbing is being requested to improve of the tanks water overflow system plus they need to install a tank fill flush system.

Pearl Beach community volunteers have contributed significantly to the CSC project. This has involved significant time and expertise in building foundations for the two tanks, the plant room housing the invertor and the batteries, and the lean-to shed housing the water manifold system and the generator.

The Neighbourhood Safer Place Operation Procedures, the vital part of community safety preparedness, has been completed. Whilst the Safety Advisory group and PA Executive members are to receive introductory training for the activation and operation of the ‘Neighbourhood Safer Place’, we are seeking up to 12 community volunteers to be trained up as well – anyone interested please contact Paul Toohey by mobile 0412 254 9797 or [p.toohey48@gmail.com](mailto:p.toohey48@gmail.com) to obtain details.

### **Neighbour Alert:**

Street Contacts contacted their neighbouring residents in Dec/Jan to update the Neighbour Alert records. Unfortunately, there has been approximately a 50% response level due largely to holiday period. Residents are requested to return their Neighbour Alert – Household Information form to their Street Contact this coming month.

### **Mobile Phone Reception Issue**

This is a continuing problem for Pearl Beach residents not only in their day to day lives. Critically, the quality of the mobile phone tower reception affects the efficiency and effectiveness of the Neighbour Alert system which relies on mobile phone SMS text messaging and the same can be said on Emergency Services/Police emergency broadcast SMS text messaging system to all mobile phones registered on the Mt Ettalong Mobile Phone tower at any given time.

We have been liaising with the Communications Alliance the representative body of the major telcos namely, Telstra, Optus and TPG regarding the situation seeking their review and possibility of infrastructure update at the Mt Ettalong Tower.

The Minister of Communications, the Hon Michelle Rowland MP, advised by letter late last year that Pearl Beach has been placed on the department's eligibility list under the PUMP / Peri-Urban Mobile Program and strongly suggested/encouraged we communicate with the major telcos for their support for infrastructure improvement as the telcos are required to submit their recommendations and contribute 50% of such costs.

Therefore, we have been liaising with the Communications Alliance the representative body of the major telcos namely, Telstra, Optus and TPG regarding the situation seeking their review and possibility of infrastructure update at the Mt Ettalong Tower. To obtain onsite reports to fully understand the nature of the geography and the challenges of Pearl Beach's densely wooded residential area, we provided them with our own survey demonstrating sub-standard reception – see below.



Our local federal government MP, Dr Gordon Reid, is supportive of this whole adverse situation and has agreed to meet the Progress Association to fully discuss and look for a



way forward through further approaches to both the Minister for Communications and the major Telcos.

### **Beach Safety**

**Rock Pool** cleaned 10 Dec with the next clean scheduled late February / early March subject to tides and the weather conditions.

**Emergency Response Beacon**, an autonomous emergency response tool being rolled out at identified 'back spot' locations across the state to assist in lifesaving activities. Pearl Beach identified as a non-lifeguard patrolled beach has been approved for the installation of a EBS by Surf Lifesaving NSW and the Central Coast Council - **to be installed in April/ May at the Agate Street beach entry on the right-hand side.**

The EBS installation is funded by NSW State Emergency Management grant funds administered by Surf Lifesaving NSW who meet the maintenance and communication costs for a 3-year period following which the asset transfers to the Central Coast Council who from that point are responsible for the maintenance and communication costs.

### **Volunteer Recruitment for the RFS Community Fire Unit**

Additional volunteers are being sought by the Pearl Beach Brigade for the Community Fire Unit. The Brigade is planning an information day on March 25<sup>th</sup> seeking volunteer recruitments for both the Rural Fire Service and the Community Fire Unit. Specific details will be advised by Facebook prior to the 25<sup>th</sup> March. For up to date information <https://www.facebook.com/nswrfspearlbeach>

### **PEARL BEACH – SPEED LIMIT AND SHARED USE ZONE**

Whilst Council is supportive, they have been waiting on the issue of Transport NSW's updated street speed limit policy which they expect to receive Q1 2023. Meantime, there has not been any action by Council. Three other suburbs have also applied for 40K speed limits and a priority list will become necessary aligned to Council's budget restraints.

### **Fund Raising – Bunnings Sausage Sizzle**

Bunnings West Gosford kindly offered the Progress Association / Safety Advisory Group a one-off Sausage Sizzle fund raising opportunity which we accepted and ran on Sunday 5<sup>th</sup> February. The fund-raising purpose was to assist towards additional costs associated with the Community Support Centra.

It is pleasing to report we had a very successful day raising \$2,615. Many thanks to all our volunteers on the day - Paul Bairclaire, Helen & Adrian Thurlow, Malcolm McDonald, Lynne Lillico, Peggy Todd, Nigel Tisdale, Russell Grove and the Tooheys.

Importantly, we are highly appreciative of being offered a \$800 sponsorship by Troy Rushton/Pearly's Café – very much appreciated Troy.

**Paul Toohey, Pearl Beach – Safety Advisory Group      24 February 2023**

## Poison Baits at Pearl Beach

**In recent days an extremely shameful activity has been undertaken at Pearl Beach putting residents, visitors, local wildlife and domestic animals in danger!**

Pearl Beach, situated between Brisbane Water National Park and Broken Bay is home to a small and caring community who enjoy the natural and cultural inheritance. They and visitors are often seen walking along the beach front many with their dogs savouring the environmental surroundings.

However, a few days ago the tranquil existence was shattered when a gorgeous local dog, Minnie took a bait near the Amenities Block. Minnie spent the next few days at a local Veterinary Hospital on a drip and in a death threatening situation. Fortunately she is slowly recovering and home with her owner.

This serious situation has upset many residents and Pearl Beach Progress Association president, Katrina Stafford quickly gathered a group of concerned locals who inspected the length of the beach as well as other near by locations. Karina reports on their findings as follows:

- a group of about 25 local residents came together to clean up the beach & other surrounding parkland
- grave concerns for domestic animals & wildlife
- residents are reporting dead wildlife including birds, snake, rats
- baits have been found over the last week in several areas
- at least an additional dozen baits found today
- reported to police & local council rangers
- one dog who was rushed to the vet where they were treated for several days - vet bill exceeds \$5000
- Baits range from blue pellets of ratsak wrapped in food to red 'brick' style rat baits (often used on commercial/industrial premises) that have been chopped up & scattered on the grass & beach area.
- many residents particularly older ones live by themselves & their dogs are far more than 'just Pets'
- a large number of baits found near a grassed area where many people sit & catch up with friends & neighbours with their dogs by their sides.

The community have agreed to set up a 'Go Fund Me' page to raise money to help cover Minnie's vet's bills. We invite the locals, visitors and friends to donate with access via - <https://gofund.me/c4479fb5>

Further information,  
Lynne Lillico, Publicity  
Pearl beach Progress Associations  
4344 2319  
[lilli77@bigpond.com](mailto:lilli77@bigpond.com)



## Pearl Beach Rural Fire Brigade

Bush fires were a major concern for the early settlers in Pearl Beach. The formation of a brigade to fight bush fires came very early and for many years was a significant reason for the continuing existence of the Progress Association. Residents and friends are invited to **Training sessions** for both **RFS** and (Community Fire Unit) **CFU** members on the last Saturday of the month (so 25th March, 29th April) from 3pm to 5pm. Meet at the Fire Station, 39 Emerald Avenue.

"Have you ever wondered what motivates people to join a volunteer organisation like NSW RFS? With 70,000 volunteers across the state, there are probably 70,000 unique reasons. Some join to take on a new challenge, some to give back to the community. Some join for the mateship and the camaraderie which come from training and working together. Some do it because they want to make a difference. Whatever your reason, being part of an organisation like NSW RFS can be an incredible and rewarding experience.

NSW RFS - Pearl Beach Brigade is looking for members of the community - not just Pearl Beach, but also #umina, #uminabeach, #ettalong, #ettalongbeach, #BookerBay, #Blackwall, #woywoy and surrounding suburbs.

***THE COMMUNITY ARE INVITED TO COME ALONG 5pm – 7pm Saturday 25th March  
39 Emerald Avenue***



The Pearl Beach Rural Fire Brigade holds a special place in our lives, a place that we should be proud of and support, and one that we should appreciate every day.

**Lynne Lillico**



## SINGERS

Well we are back to our Friday singing and desperately seek more singers. Our numbers are getting a little thin not to mention a little older so we need some more voices. If anyone is interested please phone me as we have considered changing days and times and it may suit you. At present we meet at the hall 2 pm each Friday.

Pauline. M. 0411 752 834



## SINGERS WANTED

## PLODDERS

I have been organising walks since 1997, although walks are certainly less strenuous, I do so in the hope that you will be able to join me for 'plods'. Thinking the March plod maybe to The Basin for a picnic lunch and perhaps a swim. I will send an email when this has been finalised.

**Plod Dates** - We walk once a month on the 3rd Tuesday. It is recommended to mark these Tuesdays in your diary. If you are unable to attend a plod please send me a text etc.

Twenty nine Pearl Beach Plodders enjoyed 6 nights staying in Mudgee at Mudgee's Getaway cottages.

Elington Manor, one of the 4 cottages, accommodated 12 in 5 star Luxury complete with swimming pool. First night Happy Hour, at the Manor, followed by a stroll into town for dinner. Set on 9 acres, and bordered by the Cudgegong River, provided plenty of room to roam, time to sit under the River Red Gums, and pet the animals in the mini farm. The program included a walk/picnic at The Drip, in Munghorn Gap Nature Reserve, a visit to

Hill End, lunch at Moothi Estate Winery, Gulgong Holtermann Museum and plenty of free time to explore Mudgee, swim in the Manor pool and generally socialise.

Bev Lapacek





Pearl Beach  
ARBORETUM

<https://www.pearlbeacharboretum.org.au/>

### Pearl Beach Arboretum

The Arboretum committee and others have been very busy in enhancing the Arboretum for all to enjoy.

One major project is the refurbishment of our benches. Gary and Alison Phillips have spent many hours repairing and refurbishing. The first one has been installed – and it is a beauty. One down – ah about 15 to go. *Gary and Alison Phillips on the bench they restored.*





We also had a beautiful sandstone bench installed by the Greenway family. It is a lovely reminder of John Greenway, our president for many years and a hard worker for Arboretum.



*Marijke and Michelle Greenway on the sandstone bench.*

We are refreshing our website to make it easier to find information and to help us update it. A big thank you to Barry Kay who is helping us with the process.

We have also produced a Management Plan which is awaiting Council comment and we have engaged a Landscape Architect to work with us on our long term plans through a Landscape Masterplan. We will invite Arboretum members to a Landscape Masterplan consultation in April/May 2023.

Every Thursday we have a few stalwart workers who come and do some planting, weeding and other essential tasks. 9:00am to about 11:00am. Come along and join us – there is a cup of tea or coffee at the end.

Our major working bee is held on the third Sunday of each month at 9:00am. The next one is 19 March. Bring gloves, sunscreen and a hat. Wear sturdy shoes. A very scrumptious morning tea is provided at 11:00am.

Hope to see you in the Arboretum soon.

Victoria Crawford, President

**The Arboretum has prepared a Draft Management Plan. It is available at this link.**



[Arboretum Management Plan Final Draft November 2022.pdf](#)

Mary Knaggs

**Secretary. Crommelin Native Arboretum Inc. 0427 502042**

[Secretary@pearlbeacharboretum.org.au](mailto:Secretary@pearlbeacharboretum.org.au)

9 Diamond Rd, Pearl Beach NSW 2256

<https://www.pearlbeacharboretum.org.au/>

<https://www.facebook.com/PearlBeachArboretum/>

**SANTA BROTHERS, ONE BAD, OTHER GOOD.**

Two brothers have played the part of Santa at Pearl Beach Christmas Carols.

The older brother Bruce appeared as Santa for many years before he was “sacked” for being bad Santa.

Brother Tom, eleven years younger, was Santa last week and wildly acclaimed by adults and children as the good Santa.

“Bruce had lost his life partner and then his little dog. He became a bit cranky as he aged. There were complaints that he had become a rude and abrupt. When a mum asked him if he had a soft centre lolly Santa replied ‘who do you think I am? Darrell Lea!’”

“This was too much for the Pearl Beach Progress Association and Bruce was never asked to be Santa again”.

Bruce passed away in October 2009.

“His sequin costume was packed away until I was asked to be the Santa this year” Tom said

In agreeing to be Santa I hoped to redeem Bruce’s behaviour”

From all reports Tom did.

And is waiting for the Committee to rate him and invite him to appear next year as “the good Santa”.\_\_\_\_\_

NOTE: This incident and Bruce Glynn’s time at Pearl Beach is included in Tom’s recently published memoir, “God’s Ad-Man”- available for \$10. Email [tjglynn@outlook](mailto:tjglynn@outlook) for more details.

**TOM GLYNN 0411 212 895. Photo of arrival in John Hames 1970 restored Fiat to the cries of hundreds (almost)!**



## WHATS ON IN PEARL BEACH



## Habitat

A Sculpture Exhibition by  
**Gaby Porter**

Saturday 8 April to Tuesday 11 April 2023

11:00 AM to 4:00 PM

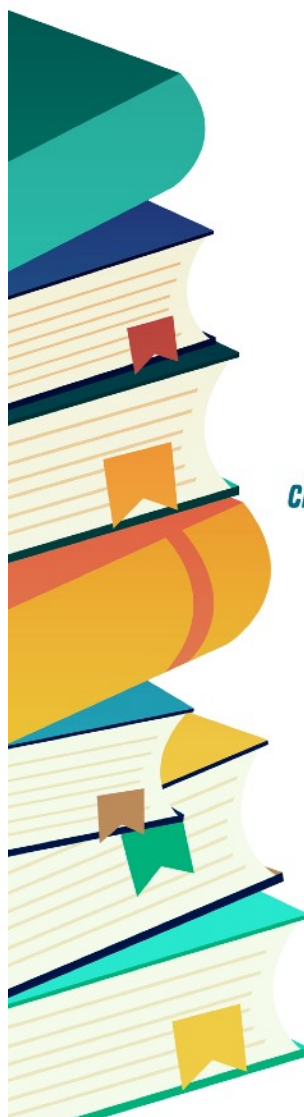
The Pink Onion Sculpture Garden

61 Crystal Avenue

Pearl Beach NSW 2256

☎ 02 4344 3771  
✉ [gaby@thepinkonion.com](mailto:gaby@thepinkonion.com)

☎ 0414 525 216  
🌟 [www.thepinkonion.com](http://www.thepinkonion.com)



### **BOOKS & BARGAINS**

**CHOOSE FROM A WIDE SELECTION OF BOOKS**

**INCLUDING FAVOURITE AUTHORS**

**FICTION & NON-FICTION**

**CDS, DVDS, RECORDS & PUZZLES**

**PLUS MADE BY LOCALS STALL,**

**BACK DECK CAFE & RAFFLE**

**SATURDAY 8TH APRIL 2023**

**9AM - 5PM**

**PEARL BEACH MEMORIAL HALL**

**9 DIAMOND ROAD**

**ALL PROFITS TO**

**THE PEARL BEACH PROGRESS ASSOCIATION**

**[WWW.PEARLBEACHPROGRESS.ORG.AU](http://WWW.PEARLBEACHPROGRESS.ORG.AU)**



## ARTIST TRAIL AND ARTIST HUB IN THE ARBORETUM

EASTER SATURDAY 10 - 4 PM



Maps available from Artist venues

Look out for the Red Flags



## TENNIS AND BOWLS

A number of tennis groups play on a weekly basis, however new players are always welcome to come along and join us, make new friends and embrace the social activity .

**There will be a Social Day for Tennis and Bowls on Sunday 2nd April : Registration 9.0am, Lunch 12.30 pm . All welcome, Cost to be advised 15.00. pre-registration to Judy - 0418 436 225**

The Pearl Beach Bowlers are looking for new participants, join one of three groups, ladies and gents who play on a regular weekly basis.

Bowls - contact Robert on 0477 486065

Court hire Tennis & Bowls. \$15.00 per hour for members \$20.00 non members – Visitors are welcome to enjoy the unique Pearl Beach environment

**Coach Mark Rawlingson 0412 327 801**

**To book a tennis court or bowls green – Judy 0418 436 225**



Pearl Beach  
ARBORETUM

**@PBEAT2023**

Pearl Beach Arboretum  
Ephemeral Art Trail 2023  
**Saturday 16 Sept to Sunday 15 Oct 2023**

The Pearl Beach Arboretum Ephemeral Art Trail (PBEAT2023) will run this year in Spring from Saturday 16 September until Sunday 15 October 2023. This will mean we have warmer weather for outdoor events surrounding PBEAT.

PBEAT aims to create inspiring temporary public art that promotes nature conservation, supports community identity and increases the cultural vibrancy on the NSW Central Coast. Community groups and artists will be invited to enter ideas for installations that have been inspired by the local environment of Pearl Beach and the Woy Woy Peninsula. Preference is given to proposals that use natural Australian plant materials found on the Central Coast. Expressions of Interest will open in May 2023.

PBEAT2023 will be open to the Public for free during daylight hours. There will be at least 20 artworks on display and the ability to vote for the People's Choice Award. On weekends the Arboretum Cottage will feature workshops and local Artists displaying their works.

For more information including videos of PBEAT2022 please go to [pearlbeacharboretum.org.au/pbeat2023/](https://pearlbeacharboretum.org.au/pbeat2023/) or email [pbeat@pearlbeacharboretum.org.au](mailto:pbeat@pearlbeacharboretum.org.au).

#PBEAT2023 @PBEAT2023



Highly commended work from PBEAT 2022 was "Tide Rising" by local artist Jojo Fuller (white clay and natural materials dipped in lime wash).

Mary Knaggs

<https://www.pearlbeacharboretum.org.au/ephemeral-art-trail/>

Secretary

Crommelin Native Arboretum Inc. 0427 502042

**PEARL BEACH**[www.pearlbeachprogress.org.au](http://www.pearlbeachprogress.org.au)**'Clean up Australia Day'**  
**Pearl Beach****Sunday 5<sup>th</sup> March 2023****0830am registration - Memorial Hall**

Gloves, hat and covered shoes recommended

enquiries: **0448 751 595**

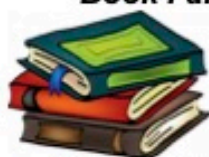
Come along and support Stephen with this important environmental activity.

**Saturday 11<sup>th</sup> March****3.00pm – 5.30pm****Bookings essential**[www.trybooking.com/CEAUX](http://www.trybooking.com/CEAUX)

Proceeds to Rotary Charities



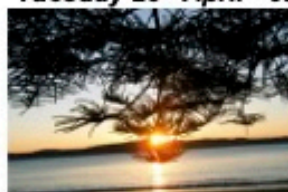
Bring a picnic, rug and chair - Access and parking via Tourmaline and Tennis Courts

**Pearl Beach Easter Saturday**  
**'Book Fair'****Saturday 8<sup>th</sup> April**  
**Pearl Beach**  
**Memorial Hall**  
**9am – 5pm**Enquiries: **0487 444537****Why not volunteer to help?**

As a significant event in the Pearl Beach yearly calendar, this year's annual Book Fair promises to be no exception, so be early to snap up that special book bargain. Enjoy the Back Deck Café, Easter Raffle, and 'Homemade by Locals' stall.

**Cash or credit cards accepted****'Pearl Beach Art Trail'**  
**Easter Saturday at a**  
**variety of Pearl Beach**  
**venues****10am – 4pm Enquiries: 0412 141721****'Trivia' fun for all !****Saturday 22<sup>nd</sup> April****7pm for 7.30pm start****Pearl Beach**  
**Memorial Hall**\$15 per player, lots of prizes -  
BYO Drinks & Nibbles**Bookings essential:**  
**0413 805024**

cash or credit cards accepted

**DATES FOR YOUR DIARY**[www.pearlbeachprogress.org.au](http://www.pearlbeachprogress.org.au)**'ANZAC DAY'****'Service of Remembrance'**  
**Pearl Beach Beachfront****Tuesday 25<sup>th</sup> April - 6am****Bring a candle, and chair if required ....**

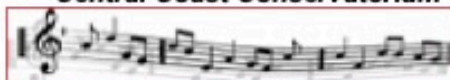
Following the beach commemoration service the community are invited to the Memorial Hall for wreath laying and dedication of the newly renovated Memorial.

light refreshments will be served.

If bad weather service will be in the hall

**'Disco Magic with Jamie'****Saturday 13<sup>th</sup> May****Pearl Beach Memorial Hall****7pm for 7.30pm****BYO Drinks & Nibbles**

Tables of 8, get together with friends enjoy a night of fun and bop away to your favourite music! Further details TBA

**Enquiries: 4344 2319****'Pearl Beach Progress Association & Irvine Family Scholarship Concerts'****performed by students from the**  
**Central Coast Conservatorium****Saturday 20 & Sunday 21 May****Pearl Beach Memorial Hall - 2pm**

This year the Pearl Beach Music Scholarship, and the Irvine Piano scholarship are valued at \$1,000 each. In addition, the audience are invited to vote for the 'Peoples Choice' award of \$500, plus the 'Runner up' will receive \$250.

The community are invited to come along and enjoy a weekend of beautiful music and support these aspiring young musicians. **Ticket cost \$10 or two concerts \$15**  
**Enquiries: 4344 2319****\* Coming Soon \*****May – Winter 'Classic Cinema Club' returns; first and third Wednesdays of each month ; Old and New members welcome - enquiries: Lynne 4344 2319****Saturday 8<sup>th</sup> October – 'Beatles Rebooted Band & Strings' Pearl Beach Arboretum**Watch the PBPA & Arboretum websites for details ....  
**Enquiries: Victoria 0407 272495, Lynne 4344 2319**



## PEARL BEACH ENVIRONMENT GROUP.

[pearlbeachenvironmentgroup@gmail.com](mailto:pearlbeachenvironmentgroup@gmail.com)

<https://pearlbeachprogress.org.au/pearl-beach-environment-group/>

At the community general meeting of the Progress Association Saturday 4 March 2023 there was overwhelming support for the “Pearl Beach Environment Group” to become a subcommittee of the Association. Watch out for lots of great environment related community activities over the year. We are also planning to improve our website with lots of useful information.

The subcommittee will be initially made up of Mary Knaggs (Convenor and PBPA Executive Committee representative), Geoff Corah, John Haymes, Peter Romey (Secretary), Gary Phillips, Malcolm Davison and Bruce Swalwell. If anyone would like to be on the subcommittee please contact [pearlbeachenvironmentgroup@gmail.com](mailto:pearlbeachenvironmentgroup@gmail.com).

The objective of the “Environment Group” sub-committee is to “**protect and enhance the environment and encourage nature conservation within the village of Pearl Beach**”. The definition of ‘environment’ is used in its broadest sense, which includes both the ‘built’ and the ‘natural’ environment, and the ‘environmental setting’ of Pearl Beach.

The aims of the Environment Sub-committee are:

- a) To educate property owners, residents and visitors about the special qualities of Pearl Beach and its setting, including its environmental and cultural significance.
- b) To promote recognition by authorities and other relevant groups of the special qualities of Pearl Beach and its setting.
- c) To promote the principles of sustainable development.
- d) To support the conservation of biodiversity and the protection of indigenous wildlife populations and habitats - to promote the conservation, planting and maintenance of native vegetation, particularly vegetation indigenous to the area, and especially to encourage retention of the existing tree cover.
- e) To promote development that is sympathetic to the Pearl Beach environment and character – and to the immediate context of each development - particularly with regard to discouraging intrusive designs with excessive site coverage, bulk and height. To recognise that to achieve this often a level of urban, architectural and landscape design skills are required.
- f) To promote development that is in accordance with relevant government legislation and guidelines.
- g) To work with other relevant groups in Pearl Beach, on the Central Coast, and elsewhere to achieve the objective and aims of the subcommittee.

The scope of activities of the “Environment Group” sub-committee include:

1. Community consultation, education and awareness raising in accordance with PBEG aims.
  2. Lobbying and submissions on relevant government (including local government) policies and strategies – and the implementation of those policies and strategies.
  3. Submissions on selected individual development proposals where the aims and objectives of the relevant legislation and guidelines are not being met in the proposal, and which may, if approved, result in a negative impact on the environment and character of Pearl Beach.
  4. Providing advice and input to the PBPA Executive Committee and members on matters relating to the environment and nature conservation within the village of Pearl Beach.
  5. Assisting individual members of the PBPA to make submissions as outlined under actions 1-3 above (e.g. providing information on how to make a credible individual submission).
  6. Liaising with similar groups in Pearl Beach and on the Central Coast.
- Mary Knaggs, President, Pearl Beach Environment Group 0427 502042**

### VALE Tom Sarti

Sadly we lost a good friend of Pearl Beach on Sunday 8<sup>th</sup> January, 2023 Tom migrated to Australia from London 1951 with his parents, they started out from the migrant hostel in Dundas, his first job was with Australian Abrasives .

Then in 1953 he joined the the RAAF where he learnt to fly, a stint with Schweps , then into the Insurance industry, the highlights a posting with Skandia to Hong Kong later Papua New Guinea, Kaula Lumpa, Perth, and Gosford with Queensland Insurance .

He retired from the workforce at Pearl Beach in the early 90s . He was the treasurer for the PBPA for 18 years and most of those years delivered the Gem newsletter over the whole beach and knew where every box was hidden.

His health declining so he and Pim moved to Ettalong to a smaller villa and occupied himself with his racing friends his maths and

computer. He loved a party a glass or two of wine and a good chat, He died with Pim in mid sentence at home, without pain or drama.

On behalf of those who knew Tom we send our loving thoughts to Pim and family. I am personally going to miss him, we shared happy and interesting times. Lynne Lillico    Photos - L. Lillico





Pearl Beach has an amazing mobile Library service that comes to the Community Hall every Friday 10.30-11.15am. Cathy the librarian is happy to help with suggestions & encourages borrowers to go online & pre-order whatever takes their fancy. Cathy will deliver these in her library van, making it very easy to borrow books. The delivery timetable rotates every 3 months.



Important Phone Numbers		Pearl Beach Contacts		
Ambulance, Fire, Police	000	Aboriginal History	Peggy Todd	0455 511 045
Poisons Information Centre	13 11 26	Arboretum	Victoria Crawford Mary Knaggs	0407 272 495 0427 502 042
State Emergency Service (Try 000 First)	13 25 00	Art Group	Marg Westcott	0401 968 947
Woy Woy Police	02 4379 7399	Bushcare	Stephen Parsons	0448 751 595
Police Assistance Line	131 444	Classic Cinema Club	Lynne Lillico	4344 2319
Wires (Wildlife Rescue)	1300 094 737	Craft Group	Bev Lapacek	0439 623 818
Gosford Hospital	02 4320 2111	Dunecare	Scott Hohne	0412 547 284
Woy Woy After Hours Medical Service (non emergencies Mon - Fri : 7pm – 10pm, Sat, Sun 1pm – 5pm)	02 4342 7189	Environment Group	Mary Knaggs	0427 502 042
Umina Post Office	02 4341 1481	Men's Bowls	Robert	0477 486 065
Taxi	0419 039 278	Neighbour Alert	Paul Toohey	0412 254 979
Woy Woy Station Infoline	131 500	Pearl Beach Progress Association	<a href="https://pearlbeachprogress.org.au/person-category/executive/">https://pearlbeachprogress.org.au/person-category/executive/</a>	
Busways	1300 692 929	Pilates	Coby	0417 457 005
7 days a week Pharmacist in Umina (Blooms)	43416906	Plodders	Bev Lapacek	0439 623 818
		Roads infrastructure	Peter Richardson <a href="mailto:Peter.richardson@mail.com">Peter.richardson@mail.com</a>	0411 735764
		Safety Advisory	Paul Toohey	0412 254 979
		Salsa	Cruz Vazquez <a href="https://www.365xdance.com/">https://www.365xdance.com/</a>	0413 279 944
		Singers	Pauline Toohey	0411 752 834
		Stretch / Gym	Laura Witchard <a href="https://www.fitlifeau.com.au/">https://www.fitlifeau.com.au/</a>	0402 160 246
		Tennis & Bowls	Judy McFairlane	0418 436 225
		Yoga	Hayley	0402 180 912